

Four bed House - Terraced

Stockport Road, Grove Village Manchester

£225,000

Stockport Road, Grove Village, Manchester, M13 9DZ

£225,000

homes4uTM
for all your property needs

Virtual Tour Available. This mid town house built by Gleeson homes offers accommodation set over three floors with garden to the rear. Two bathroom, a W.C, four bedroom and an open plan lounge and kitchen area. The property benefits from gas central heating, double glazing and garden to the rear. Let out £860 PCM



View all our properties at
[homes4u.co.uk](https://www.homes4u.co.uk)

Whilst we endeavour to ensure the accuracy of property details, we have not tested any apparatus, equipment, fixtures, fittings or services and so cannot verify that they are in working order or fit for purpose. Neither have we had sight of legal documents to verify Planning Permission or the Freehold or Leasehold status of any property. Buyers are advised to obtain verification from their solicitor and/or surveyor. Items shown in photographs are not included; they may be available by separate negotiation. Although we try to ensure the accuracy of measurements, we recommend if potential purchasers require accurate measurements to order flooring, or to ensure existing furniture will fit, they should take their own measurements.

 The Property
Ombudsman

Stockport Road, Grove Village, Manchester, M13 9DZ

£225,000

homes4uTM
for all your property needs



- Accommodation set over three floors
- Open plan lounge and kitchen area
- Central heating & Double glazing
- Mid town house with Garden to the rear
- Two bathroom and W.C
- Manchester Royal Infirmary is under half a mile away

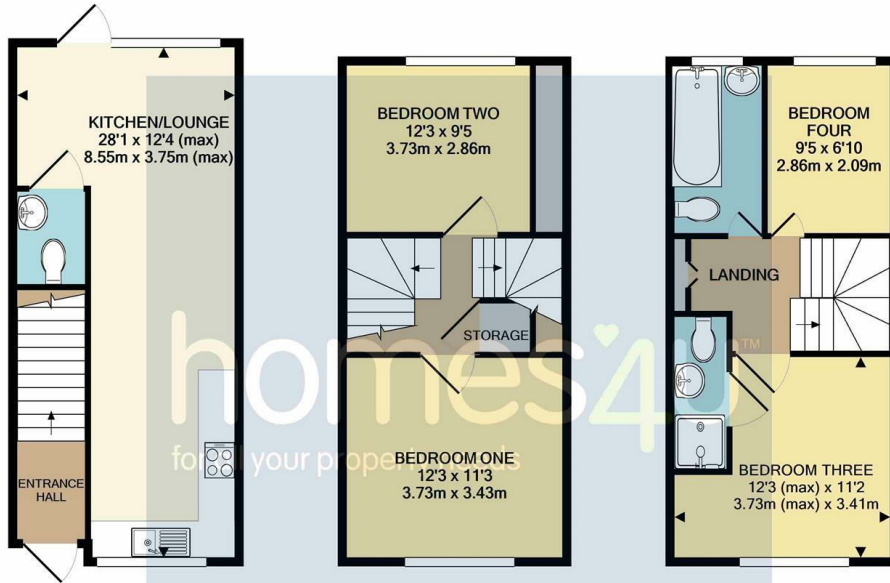
View all our properties at
[homes4u.co.uk](https://www.homes4u.co.uk)

Whilst we endeavour to ensure the accuracy of property details, we have not tested any apparatus, equipment, fixtures, fittings or services and so cannot verify that they are in working order or fit for purpose. Neither have we had sight of legal documents to verify Planning Permission or the Freehold or Leasehold status of any property. Buyers are advised to obtain verification from their solicitor and/or surveyor. Items shown in photographs are not included; they may be available by separate negotiation. Although we try to ensure the accuracy of measurements, we recommend if potential purchasers require accurate measurements to order flooring, or to ensure existing furniture will fit, they should take their own measurements.



Stockport Road, Grove Village, Manchester, M13 9DZ
£225,000

homes4u
for all your property needs



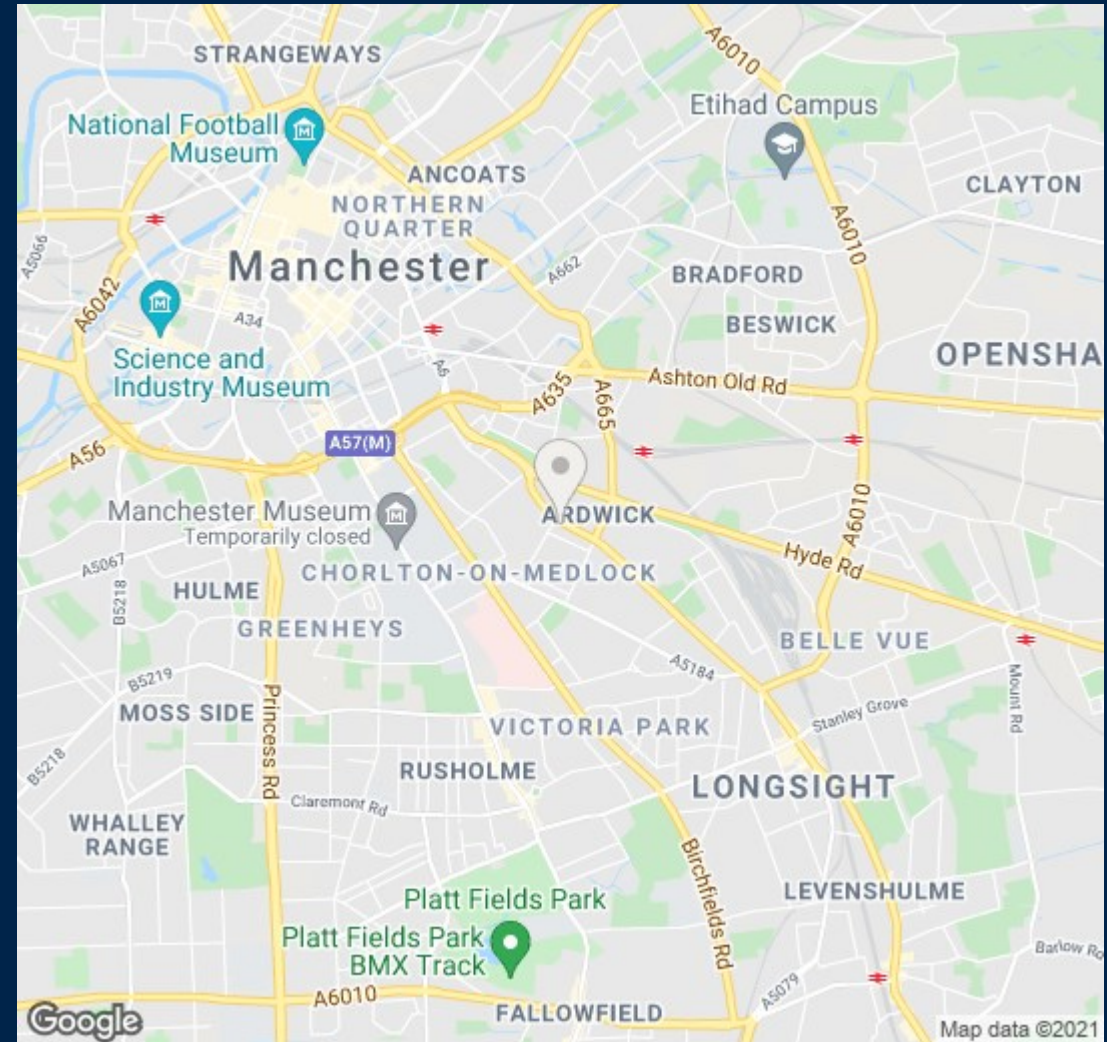
GROUND FLOOR
APPROX. FLOOR
AREA 339 SQ.FT.
(31.5 SQ.M.)

1ST FLOOR
APPROX. FLOOR
AREA 328 SQ.FT.
(30.5 SQ.M.)

2ND FLOOR
APPROX. FLOOR
AREA 328 SQ.FT.
(30.5 SQ.M.)

TOTAL APPROX. FLOOR AREA 995 SQ.FT. (92.5 SQ.M.)

Whilst every attempt has been made to ensure the accuracy of the floor plan contained here, measurements of doors, windows, rooms and any other items are approximate and no responsibility is taken for any error, omission, or mis-statement. This plan is for illustrative purposes only and should be used as such by any prospective purchaser. The services, systems and appliances shown have not been tested and no guarantee as to their operability or efficiency can be given
Made with Metropix ©2020



homes4u
for all your property needs

City Centre and North Manchester

Sales Team 0161 236 8606
Rentals Team 0161 236 0202
city@homes4u.co.uk

South Manchester and Cheshire

Sales Team 0161 448 4805
Rentals Team 0161 448 0090
southmanchester@homes4u.co.uk

[@homes4u](#) [homes4umanchester](#) [homes4u.manchester](#) [homes4u](#) [homes4u](#)

View more properties at homes4u.co.uk